



THANK YOU FOR PURCHASING **SAWBONES COLLES FRACTURE REDUCTION & CASTING TECHNIQUE TRAINER**

This multi-discipline training model allows users to incorporate manual reduction with real time fluoroscopic visualization. With a little care and maintenance your new model should provide you with many years of service.

The #1530 trainer was designed and developed by sawbones® in collaboration with The Children's Hospital of Philadelphia.



COMPONENTS

MODELS INCLUDE:

- Soft tissue arm model with bones
- Multi-position universal bed rail clamp (allowing the user to train in the most common patient positions.)
- Adapter plate with setup instructions
- Instructional flash drive

NOTE: Replacement parts available at www.sawbones.com

Traditional roll on casting, performed by manually reducing the fracture, can be done with or without finger traps. Casting materials can be removed using standard cast removal techniques.

SET-UP INSTRUCTIONS

The Colles fracture reduction training arm comes with two ways to secure the arm, either to a bedrail or to a table mounted clamp.

BEDRAIL SET-UP

The model arrives with the bedrail adapter attached to the arm (See set-up movie on the flash drive that comes with the arm).

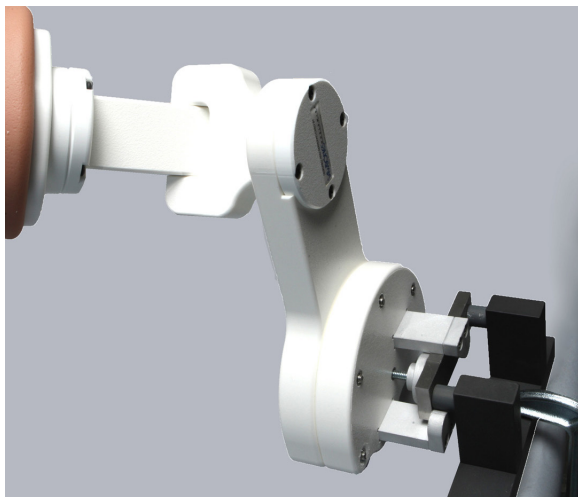


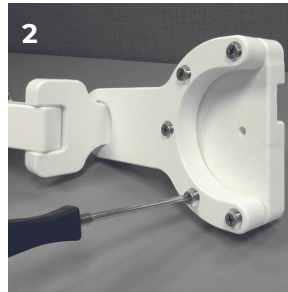


TABLE CLAMP SET-UP

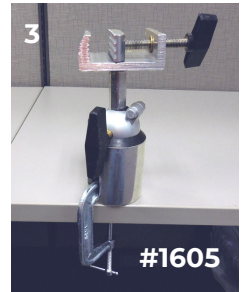
Several types of table mounted clamps can be used however, please note that the simulator has a similar to real-life weight and will require a clamp and table construction strong enough to support the weight. The table mounted clamp shown in the image to the left is Sawbones' #1605 clamp assembly (sold separately) and is ideal for use with this model.

In the event that a table clamp or vice is to be used, follow the below instructions to attach the adapter plate.

1. Remove existing bedrail clamp by removing the five screws.
2. Attach the table clamp adapter using the same five screws.
3. Attach #1605 series table clamp or compatible substitute to table with c-clamp or similar.



NOTE: There are metal threaded inserts in the adapter plate. They should be oriented as shown.



CARE & MAINTENANCE

Your model can be wiped down with any mild cleaner. Use only the dry erase marker on the model. Standard ink can not be removed. Store in a dry, dark place out of direct contact with sunlight.